



HEAVY SPRINTRACK CUSTOM-MADE

DATASHEET

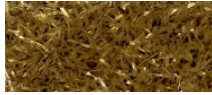
SPRINT TRACKS

HEAVY SPRINTTRACK CUSTOM-MADE

Description : A short pile polyethylene carpet for fitness. No infill required.

YARN CHARACTERISTICS

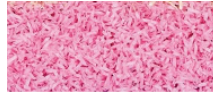
Type: Polyethylene Textured, 100% monofilament (non infill)
Dtex:6.600/8.800/11.000



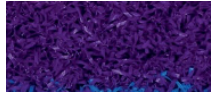
T21 - GOLD



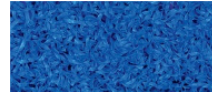
T13 - CREAM



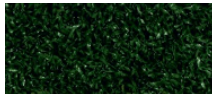
T12 - PINK



T6 - PURPLE



T8 - LIGHT BLUE



T15 - DARK GREEN



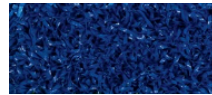
T10 - OLIVE GREEN



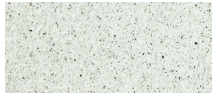
T9 - LIGHT GREEN



T20 - LIME GREEN



T8 - DARK BLUE



T11 - WHITE



T3 - YELLOW



T17 - LIGHT GREY



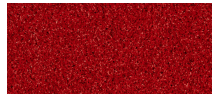
T4 - ORANGE



T11 - BROWN



T14 - RED CLAY



T5 - RED



T2 - BLACK



T19 - DARK GREY

TUFT CHARACTERISTICS

Pile Height:	13mm	Margin: +/- 10%
Stitch Rate (10 cm1):	30	Margin: +/- 10%
Gauge:	3/16	
Technique:	Completely tufted by machine, by your own design	
Width:	Custom, max 4 meter width per production	Margin: +/- 1 cm
Lenght:	Custom-made	Margin: +/- 2 cm

BREAKING CHARACTERISTICS

Primary Backing:	Woven Polyester
Secondary Backing:	Latex

TOTAL PRODUCT WEIGHT

+/- 2500 g/sqm	Margin: +/- 10%
----------------	-----------------

WARRANTY

2-year warranty

INSTALLATION & MAINTENANCE

- Heavy Sprinttracks are low in maintenance, just like artificial grass, but not maintenance-free
- Ask for the installation manual for installation
- Use a vacuum cleaner (with brush) to clean the track.
- Use clean water and mop to rinse the track
- Avoid contact with hot materials (or close proximity to glass structures) to prevent shrinkage of the grass fibers.
- Do not drop any weights on the track

WARRANTY

Each Heavy Sprinttrack has a 2-year warranty against fibers coming off, under the following conditions:

- Installation manual is read before installing.
- Track is attached proper to the floor with double-sided tape or glue.
- Spikes shoes are not allowed.
- The floor must be 100% flat.
- Track must be surrounded with another floor or wall (for example lying between rubber flooring).
- Sled can not be used outside (change of damage/hooks the sled)

LOGO/DESIGN

Each Heavy Sprinttrack has a 2-year warranty against fibers coming off, under the following conditions:

- For the production of your logo or design, a Vector file is required. With preference .eps of .ai file.
- We can also produce the shape of a logo or design like a circle, ellipse, hexagon or crest.
- Margin total size logo mat: +/- 5%

GUIDELINES LOGO/DESIGN

Letters, signs and logos need to be legible and feasible, so please take following guidelines in account:

- Minimum height letter: 6 cm
- Detail (width): 0,8 cm
- Space in between letters: 0,8 cm

RECENT PROJECTS

